



SUMMER 2016

For love of the land

BIG SUR LAND TRUST

Camps! 2016

"When you close your eyes, you feel nature. You hear the wind passing through the trees, the birds chirping in the distance, and also the sound of your very own breathing. You allow yourself to fulfill this very moment with your heart and soul knowing there might not be another day like this day."

Camper, age 17, from Greenfield

"With all the imagination of our dreams and wishes, playing music under the great sunset, I start to think how I can make my dreams to be true."

Camper, age 14, from Salinas

The green grass of Glen Deven Ranch is slowly turning to fields of gold, and the northwest winds of spring are quieting. But soon this hushed landscape will be filled with new and yet familiar voices. Starting June 21, our young campers will arrive for a three-day, two-night experience at one of Big Sur's many magical spaces.

As we prepare for the 10 camps we will be hosting in our fourth season here, we're reminded of the way BSLT's mission of connecting people to the land has continued to grow. In the course of three successful summers at Glen Deven Ranch and the inaugural season of day camps at Marks Ranch, a youth community of BSLT camp alumni and advocates has taken hold throughout the Salinas Valley. At events like El Grito, Ciclovía, and our own Take It Outside, California!, we have been greeted with kids excitedly asking us through toothy grins when they can go to Glen Deven Ranch again. As we travel to various schools and community centers in the area to speak with parents about the camp experience, we keep hearing how moved their children have been by our program. Many Glen Deven camp alumni also joined us for our day camps at Marks Ranch this year, further deepening their connection to nature and their home. With the help of our donors, we are cultivating a new generation of land stewards and youth leaders who intrinsically know the boundless personal growth that is available to them when they step into the wild.

One of our camp alumni, Jennifer Vasquez of Salinas, came to us first as a camper and then became a junior counselor. This summer she will be a seasonal staff member! In June, Jennifer joins us as coordinator of the Girls' Outdoor Programs. Just back from her first year of college at UC Santa Barbara, Jennifer will draw from the leadership training she received at Girls Inc. and from her own experiences at Glen Deven Ranch—passing on her wisdom, compassion, courage, and passion for experiencing nature to a whole new generation of campers and aspiring leaders and stewards of the land.

This season also brings new partnerships with community partners—for instance, with Mary Chapa Academy in Greenfield. After students from this school enjoyed two Marks Ranch day camps this spring, they were well-prepared and eager to attend the longer Glen Deven summer program. We are also excited to be working with the Village Project, which has facilitated mentoring services and other life-changing experiences for Seaside youngsters.

From the President/CEO

On a recent Saturday morning, I read an article about the difference between personal success and significance. Success was described as something that *happens to* someone or something and is often measured in terms of what has been acquired. In contrast, significance was described as something that *happens through* someone or something. Attaining both success and significance is possible, but success does not always lead to significance. And it is significance that creates a sense of purpose and cultivates joy.

I continued to think about the difference between the two words as I laced up my boots and headed out for a BSLT-led hike at Arroyo Seco. BSLT has had incredible success in conserving more than 40,000 acres of magnificent places and important habitat throughout Monterey County. This success can easily be measured in maps demonstrating a vast and connected landscape that will forever remain scenic open space. The significance of this work, however, is better measured by how conserved lands impact people.

As I slowly made my way up the steep slopes with fellow BSLT members, we talked about our travels and the outdoor experiences that inspired us. This was not a hike for the fainthearted; it rises 2,400 feet in 3.2 miles. It was both exhausting and exhilarating. We passed through majestic valley oaks, lush stream crossings in canyons, and steep hillsides where sticky monkey flower was still in bloom.

When we finally reached our summit destination (success!), a magnificent 360-degree view was waiting. A fellow sweaty and smiling hiker exclaimed, "What an amazing landscape!" I



President/CEO Jeannette Tuitele-Lewis

thought about the significance of Arroyo Seco and other lands we have conserved as unlimited sources of inspiration and possibility. I thought about all of the Salinas Valley youth who will be experiencing the Big Sur coast this summer.

Whether we are working in coastal, inland, rural, or urban areas, your support of Big Sur Land Trust helps ensure positive environmental and community outcomes. Because of you, we can prioritize multi-benefit projects that increase the quality of life *for everyone*. This issue features examples of how your generosity enhances the significance of our conservation work while transforming lives and landscapes.

We appreciate the significance you bring with your support of BSLT!

WHAT THE RANCHO CAÑADA LAND DEAL MEANS TO BSLT

You may have seen the news reports on the "Rancho Cañada land deal." This planned acquisition of 140 acres along the Carmel River is led by a coalition of conservation organizations including the Trust for Public Land, the Monterey Peninsula Regional Park District, the Santa Lucia Conservancy, and Trout Unlimited.

We feel this could be an important component of an integrated park, open-space system, and trail network connecting regional parklands and state parklands. It builds on BSLT's extraordinary legacy of land conservation in this region and a host of collaborative projects aimed at restoring the landscape and significantly enhancing public recreation, outdoor education, and stewardship opportunities. One of our most significant collaborations resulted in the acquisition of Palo Corona Ranch – the largest land deal in Monterey County history.

The Rancho Cañada project will help implement the vision of the Lobos-Corona Parklands, a multi-agency effort led by the Big Sur Land Trust, Monterey Peninsula

Regional Park District, California State Parks, and the Point Lobos Foundation to create the next great parks and conservation landscape in California. It will connect to the South Bank Trail, completed by the Big Sur Land Trust in 2011, which serves as the eastern entrance to Palo Corona Regional Park.

We are excited that the Rancho Cañada project, combined with the recent removal of the San Clemente Dam in the upper Carmel watershed, and the Carmel River Floodplain Restoration and Environmental Enhancement (Carmel River FREE) project now being planned by Big Sur Land Trust and Monterey County in the lower watershed, could ultimately transform the Carmel River into a healthy, vibrant, flowing river system, benefiting both nature and people.





SALINAS AND THE BIG SUR LAND TRUST "TOOK IT OUTSIDE"!

On May 1, after months of creative envisioning, community dialogue, and careful planning, the Big Sur Land Trust launched its inaugural Take It Outside California! / Vamos Afuera California! event on a picturesque day at Natividad Creek Park. As the sun rose over the Gabilan Mountains, early morning bird-watchers gazed through binoculars at the multitude of species and the new chicks coming out from their slumber. Soon the park bustled with artists painting murals, skateboarders catching air, and kids taking their first yoga class. Throughout it all, Salinas school children performed in drum lines and Latin jazz combos in the amphitheater.

The day catalyzed one of the central missions of the Land Trust: connecting our communities with open space, the diversity of experiences that parks offer, and the enjoyment of the natural lands that surround us. Natividad Creek Park is a beloved example of the kind of park and open space that communities need to come together and thrive. The success of this event underscores the importance that nature and parks play in healthy communities.

Because we wanted feedback from community members on what they would like to see for their parks and open space, BSLT, along with Building Healthy Communities East Salinas, asked people of all ages visiting our booth to write out their vision

for parks in Salinas. This exercise is part of our continued effort to reach out to new audiences and hear new voices to understand how nature and conservation intertwine with community well-being.

Take It Outside! is a statewide initiative driven by the California Council of Land Trusts. Its goal is to get Californians outdoors to celebrate the state's natural beauty, parks, and open spaces. We are grateful to the city of Salinas and our partners who delivered on the collective vision for the day. The Alisal Center for the Fine Arts, Alisal Community Arts Network, Baktun 12, Building Healthy Communities, Local Urban Gardeners, MILPA, Return of the Natives, and the Urban Arts Collaborative all created interactive activities and led the charge to bring the community together and celebrate what it means to get outside! We would also like to sincerely thank our sponsors: Bank of America, Community Hospital of the Monterey Peninsula, Merrill Lynch, and Salinas Valley Memorial Healthcare System.



CORPORATE & MEDIA SPONSORS





Photo © Winston Boyer

AN UPDATE ON THE CARR LAKE PROJECT

This spring, Big Sur Land Trust made local news when we entered into contract with the Ikeda Farms Partnership to acquire 73 acres at Carr Lake, a 480-acre seasonally dry lakebed located in the middle of Salinas. We hope to close the deal by January 2017. Having already been granted funds from the Packard Foundation and the California Coastal Conservancy, we are optimistic that we can secure the funding necessary to meet the purchase price. Meanwhile, we're pursuing other public and private funding sources.

BSLT is extremely excited to be taking this first step on Carr Lake as a landmark community conservation project in the heart of the city, as it aligns perfectly with our mission to enhance opportunities for people to access nature where they live. For nearly a decade, the Big Sur Land Trust has worked toward acquiring portions of Carr Lake in order to create a transformative park, habitat, and open space complex. The Ikeda property is the first of the Carr Lake parcels that has been available for sale.

Because the Land Trust recognizes that it is crucial to hear residents' own vision for parklands, we are raising additional private funds to help support a robust community engagement process as a critical component of this project. To work toward a shared vision for the property as a whole, BSLT has gathered a core planning team composed of representatives from the city of Salinas, California Endowment's Building Healthy Communities



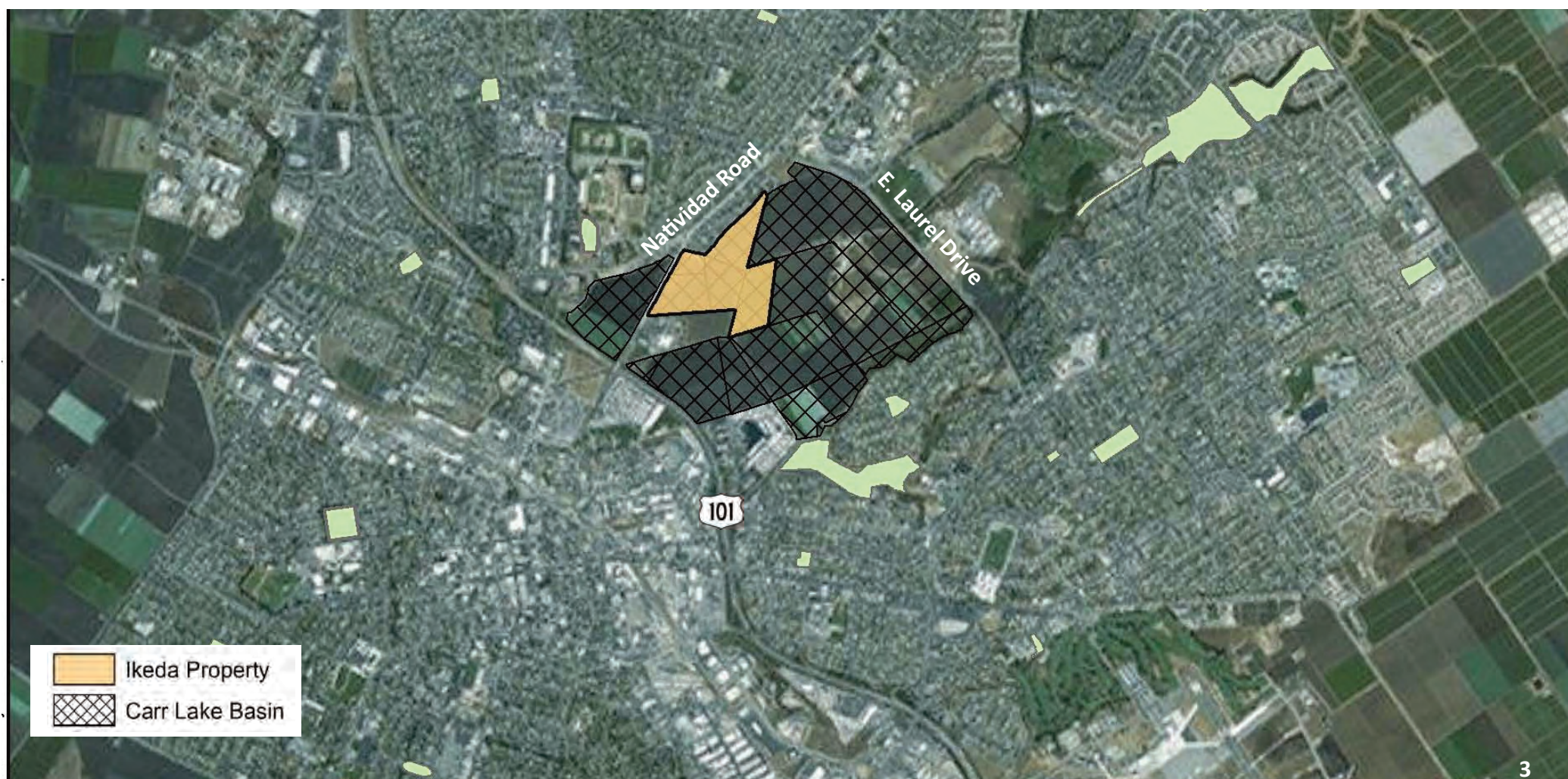
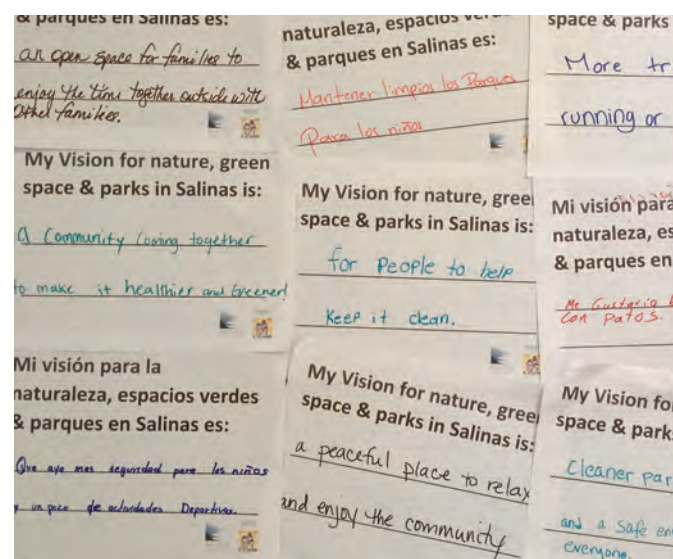
LEFT: BSLT Director of Conservation Rachel Saunders and Conservation Projects Manager Joanna Devers take a moment to celebrate with Assemblyman Luis Alejo and Coastal Conservancy Project Manager Janet Diehl, after the Coastal Conservancy approved BSLT's grant request for the Carr Lake project.

Initiative in East Salinas, the Monterey County Department of Health, and Return of the Natives (a restoration education project associated with the Watershed Institute at California State University, Monterey Bay). BSLT board members Alfred Diaz-Infante, Judy Sulsona, and Mike Thomas are also participating.

The Carr Lake project will provide multiple social benefits, including safe parklands and community spaces where people and nature thrive while creating more possibilities for lasting prosperity and health. It will also provide multiple environmental benefits, including ecological restoration, improved water quality, and flood management.

Stay tuned for more exciting details as this significant project unfolds!

RIGHT: Big Sur Land Trust is already reaching out to the public to get their vision for nature, green space, and parks in Salinas.



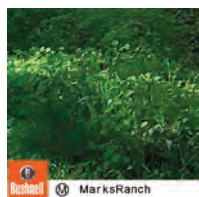
Ikeda Property
Carr Lake Basin



ADVENTURES ON THE LAND FROM SUNRISE TO MOONRISE

RUNNERS AND HIKERS AND WILDLIFE TRACKERS ...OH MY!

Our 2016 events season kicked off in March at Marks Ranch, located in Salinas, just off Highway 68. Guests could choose from an early morning run or a family fun-run/hike and wildlife-tracking adventure. BSLT is grateful to Chris Cleary, owner/CEO of the Treadmill in Carmel, for developing the running events and promoting the opportunity to the community. We also want to give a big “thank you!” to wildlife biologists Tanya Diamond and Ahiga Snyder, co-principals of Pathways for Wildlife, for sharing their expertise.



Our day started at 6:30 a.m. with a spectacular sunrise run for the Treadmill’s “Silly Sunrisers” followed by our family-friendly event. After the “fun runners” took off on their adventure, Tanya and Ahiga provided 30 hikers of all ages with an overview on animal tracking. “We really enjoy telling the story of how Marks Ranch was conserved through our research in identifying it as an important wildlife corridor and habitat for many species,” Tanya explains. Then, with wildflower identification cards in hand, we spent the morning discovering all the magic and beauty Marks Ranch offers. The hike was highlighted by a trip to one of the wildlife cameras, where we viewed pictures of coyotes and other animals taken just hours and days prior to our visit. In describing the day, Chris exclaims, “Marks Ranch, with its glorious array of colorful wildflowers, gently rolling green hills, native grasslands, and beautiful oak woodlands, gave us all an unforgettable experience!”



A MAGICAL MOMENT OF MOONLIGHT

After days of rainy forecasts, on Saturday evening, May 21, Big Sur’s weather spirits worked their magic and gave our donors and their guests a spectacularly clear, moonlit evening. Sixty hikers made their way out to the point at Glen Deven Ranch, savoring their picnics and the camaraderie of sharing an exquisite view of the Big Sur coast at sunset.



After Jeannette Tuitele-Lewis welcomed everyone, we all quietly spied the moon peeking over the Santa Lucia mountains. Our silence was broken only by the haunting sound of “gypsy” music softly played by Rick Chelew on his guitar and Elise Leavy on her concertina. With the full moon, Mars, and Jupiter on display, the enchantment continued as BSLT’s Sarah Hardgrave and Todd Farrington read poems by Robinson Jeffers. Trent Hodges followed with selections written by our teen campers, who drew inspiration from their profound summer camp experiences at Glen Deven Ranch.

Everyone took pause at the mystical quality of our experience on that hillside. Stepping out of our reverie long enough to hike back to the ranch house, we said our goodbyes knowing that we would continue to delight in this epic memory.



IN MEMORIAM: PAUL DANIELSON AND IAN ARNOF

By George N. Somero, Board Chair

It is with a sense of deep loss that I report the passing of two former trustees, Paul Danielson and Ian Arnof. Paul and Ian made tremendous contributions to BSLT through their long service on our board. Each possessed a unique set of interests and talents that provided the type of wide-ranging expertise necessary to achieve our diverse mission.

When I joined the board in 2006, Paul served as a most helpful and enjoyable mentor. He familiarized me with the organization and its activities and created in me a profound sense of the importance of our mission in conservation. His passion for the land was contagious! Paul was an avid hiker who sought to understand the history of the region he most loved to explore, the Ventana Wilderness. He wrote two books that describe the early exploration of that region: *Lost Camps of the Ventana* and *Invisible Camps of the Ventana*. In addition to his work with the Land Trust, Paul was an important contributor to other conservation organizations, including the Ventana Wilderness Alliance. In keeping with his long career as a clergyman and his reputation as a source of wise counsel, Paul added greatly to the broad ethical perspective our organization manifests in protecting land and encouraging people to benefit physically and spiritually from interacting with nature.



Paul Danielson

Ian Arnof also made vital contributions to our organization for many years, perhaps most notably by managing our financial activities and planning our programs in a fiscally responsible way. With his background in banking, he helped us develop the financial perspective necessary for our expanding mission to succeed. Ian brought to his work not only formal experience but also a persona that exuded his New Orleans-infused kindness and charm, which could “warm up the room.” Like Paul, Ian was widely involved in community service. In New Orleans, he was affiliated with Teach for America, and in Monterey he served with distinction on the board of the Community Hospital of the Monterey Peninsula. Ian’s well-honed skills helped us maintain a stable financial position as we navigated many “new waters” with our expanding missions in conservation and community engagement.



Ian Arnof

Paul and Ian exemplified what service to nonprofit boards should be. Their expertise, passion, and willingness to perform challenging and demanding activities helped us become the broadly successful organization we are today.



LAND & LEGACY SOCIETY

Individuals and families who include Big Sur Land Trust in their charitable estate plans exemplify the spirit of stewardship that conserves Monterey County's treasured landscapes for generations to come. Big Sur Land Trust established the Land & Legacy Society to honor and acknowledge those who provide support by including the Land Trust in their estate plans.

We invite you to join a growing group of open space enthusiasts who, as a part of their legacy, have already made a lasting commitment to preserving our treasured landscapes.

**For more information, contact Kate at
831-625-5523 ext. 105**



Anonymous (16)
Pat Addleman
Luis & Ronnie Alvarez
Dawn Anderson
Rick & Margaret Baldwin
Bonnie Brooks
Phillip Butler & Barbara Baldock
Andrea Carter
Katharine Comstock
Norma Davis
Molly Doty
Susan W. DuCoeur
Steven & Fila Evanson
Lowel Figen
George Finney
Meade Fischer
Rosalind & Howard Fisher
Linda and Howard B. Fosler
Mary R. Gale
Nadya Giusi
Jack Glendening
Patricia Goughan
Karyl Hall
Diane E. Harmon
John & Marcia Harter
Arthur W. Haseltine
Catherine Hawley
Trish Hibben
Joanne Hively
Mrs. Jeanne S. Holmquist

Elsa Con PhD. & Richard E. Jackson PhD.
Gary Kuris
Bill & Lorien Leahy
Zad & Laela Leavy
Eva Lindberg & Paul Shemella
Janette Loomis
Fred and Patricia Maurer
John & Jane McCoy
Rod & Peggy McMahan
Ralph Miljanich
Mrs. Alice Moser
Don & Laura Newmark
Julia Poduch+
Sandra Reel & Bruce Merchant
Virginia Ruth
Karin L. Salomon
Ms. Vilma Siebers
George Somero & Amy Anderson
Cynthia M. Spencer
George St. Clair
Sherna Stewart
Ladd & Pat Strnad
J. D. Wachs
Lana Weeks
Bonni & Joel Weinstein
Margery J. Wheaton
Michael & Marilynn Whitcomb
Carol L. Young
Marsha McMahan Zelus

+Deceased



ABOVE: Land & Legacy Society members enjoy fabulous food and fantastic music at Glen Deven Ranch, bequeathed to the Big Sur Land Trust in 2001 by Dr. Seeley and Virginia Mudd.

ANOTHER GREAT WAY TO GIVE!

Now that the **IRA Charitable Rollover** has been made permanent, you have another great way to give. Contributing from your IRA to Big Sur Land Trust is an easy way to make a significant gift while reducing your tax burden. If you are 70 ½ or older, the IRS requires you to withdraw a certain amount annually, (called a required minimum distribution) from your IRA, and you pay income tax on every distribution you take.

However, you can donate directly from your IRA to BSLT. Gifts made from your IRA this way (up to \$100,000 per year) qualify toward your required minimum distribution but are not reportable as taxable income so they can lower your gross income and taxes. Best of all, it's easy. Contact Kate Mitchell Mehle, Director of Development, to see how you can initiate an IRA Charitable Rollover. To leave a legacy, you may also consider designating the Big Sur Land Trust as a beneficiary of your IRA.

For more information, contact Kate at 831-625-5523 ext. 105

Big Sur Land Trust 2016

MISSION: To inspire love of the land and conservation of our treasured landscapes

BOARD OF TRUSTEES

George Somero	Chair
Bob Montgomery	Vice-Chair
Judy Logan	Secretary
Nigel Lovett	Treasurer

Tom Archibald	Eric B. Lo Monaco
Sarah McCloud Berling	Steve McIntyre
Alfred Diaz-Infante	Judy Sulsona
Julie Drezner	Mike Thomas
John Gamble	
Jeanne Landreth	

ADVISORY COUNCIL

Luis Alvarez	Bill Landreth
Bill Doolittle	Jane McCoy
Steve Dorrance	Julie Packard
Rosalind Fisher	Phil Wilhelm
Alan Lacy	Marsha McMahan Zelus

STAFF ROSTER

Jeannette Tuitele-Lewis	President/CEO
Rich Hamilton	Chief Operating Officer
Guille Barbosa	Executive Assistant
Jim Cox	Glen Deven Ranch Caretaker
Joanna Devers	Conservation Projects Manager
Todd Farrington	Community Engagement Manager
Sarah Hardgrave	Conservation Programs Manager
Trent Hodges	Outdoor Programs Coordinator
Kate Mitchell Mehle	Director of Development
Adrienne Otis	Accounting Manager
Gary Peterson	Development Manager
Jeff Powers	Director of Land Stewardship
Tracy Rhoades	Office Manager
Patrick Riparetti	Stewardship Projects Manager
Amber Sanchez Leon	Philanthropy Assistant
Rachel Saunders	Director of Conservation
Carla Zilliox	Communications Manager



SAVE THE DATE!

Come get acquainted! Please join other new members and BSLT staff to explore these magnificent conserved landscapes. Contact Amber at asleon@bigsurlandtrust.org for more information.



Martin Dunes – Seashore Birds & Dunes Ecology
Saturday Morning, August 13
Moderately strenuous hike

Watch a healthy dune habitat come alive! Experts will lead this trek as you discover the diversity of protected species that call this pristine ecosystem home. For many birds, it's a critical stop along their migratory flyway.



Mitteldorf Preserve
Saturday Morning, October 8
Moderate hike with extended strenuous option

Walking through a forest is a rare and wonderful thing – especially when you get a chance to see Monterey County's largest redwood! Join us as we explore the majestic beauty of this treasured landscape.



Mitteldorf Preserve to Palo Corona Backcountry
Saturday, August 20
Very strenuous hike

Here's a rare opportunity to hike Mitteldorf Preserve to the backcountry of Palo Corona Regional Park. From old growth redwoods to the heights of Palo Corona Peak, this full-day trek celebrates one of our region's most iconic places.



BIG SUR LAND TRUST
509 Hartnell Street Monterey, CA 93940
PO Box 4071, Monterey, CA 93942-9967
Telephone 831-625-5523 Fax 831-658-0716
www.bigsurlandtrust.org

DONOR PRIVACY POLICY The Big Sur Land Trust will not sell, trade, or share personal information or send mailings on behalf of other organizations.